



PRESTIGE & VILLAGE

UK's finest properties

SPRING COURT ROAD, ENFIELD, EN2 8JP





SPECIAL DEAL - EXCLUSIVE OFFER - LIMITED PERIOD - Located on prestigious Spring Court Road, near the tranquil Trent Country Park, Chase View presents an exclusive opportunity to acquire one of just four exquisitely designed five-bedroom detached homes. Chase View presents an exclusive opportunity to acquire one of just four exquisitely designed five-bedroom detached homes. These remarkable residences, crafted by the esteemed Amara Property, are situated on the prestigious Spring Court Road, a private road that ensures both privacy and serenity. Each home spans approximately 2,500 square feet, offering a harmonious blend of contemporary luxury and practical family living. The interiors are sumptuous and thoughtfully designed, featuring high-specification Hacker kitchens equipped with Siemens appliances, multiple en-suites, and luxurious bathrooms. The highlight of each property is the stunning open-plan super room, which boasts bi-fold doors that seamlessly connect the indoor space to the beautifully landscaped rear garden, perfect for entertaining or enjoying peaceful moments outdoors. Chase View is not only about aesthetics; it is also designed with energy efficiency in mind. Each home includes air source heating, underfloor heating, and CAT6 cabling, ensuring modern conveniences are at your fingertips. The superior build quality is evident throughout, providing a comfortable and stylish living environment. This is a rare opportunity to secure a residence in a community that offers both elevated living and easy access to Enfield Town, excellent schools, and swift transport links to London. Chase View truly embodies the perfect blend of luxury, comfort, and modern living, and is ready for you to reserve now. Don't miss your chance to be part of this exclusive collection.

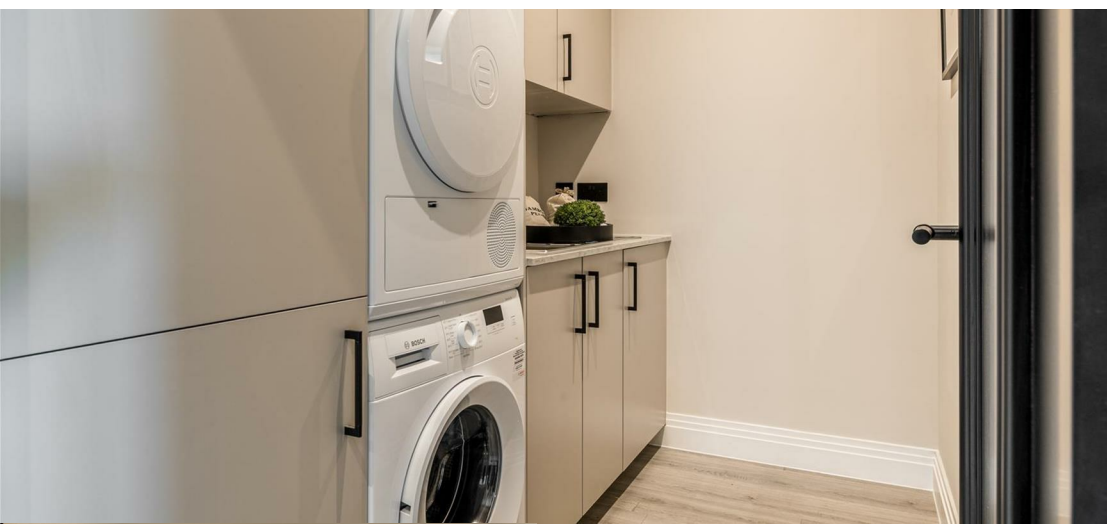






- Brand-new, five-bedroom detached family home by Amara Property - 50% OF HOMES NOW RESERVED
- Located on a private, no-through road with stunning countryside views
- Exclusive development featuring interior-designed, high-specification finishes throughout
- Three elegant reception spaces including formal living room and dedicated study
- Spacious open-plan kitchen/living/dining area with floor-to-ceiling glazing
- Five beautifully appointed bedrooms including a luxury principal suite
- Four stylish bathrooms fitted with premium Duravit and Crosswater fixtures
- Rear garden with patio, lighting and external power
- Off-street parking with block-paved driveways and EV-ready infrastructure
- Air-source heat pumps and underfloor heating throughout









## KITCHEN / LIVING/ DINING ROOM

24'11" x 21'7" (7.60m x 6.60m)

A stunning open-plan space with bespoke cabinetry, quartz worktops and full-width bi-folds opening to the garden.

## UTILITY

9'4" x 5'4" (2.85m x 1.65m)

Practical, well-designed utility with fitted storage and appliance space.

## FORMAL LIVING

14'5"\* x 9'4" (4.40m\* x 2.85m)

A refined reception room ideal for relaxation or entertaining.

## STUDY

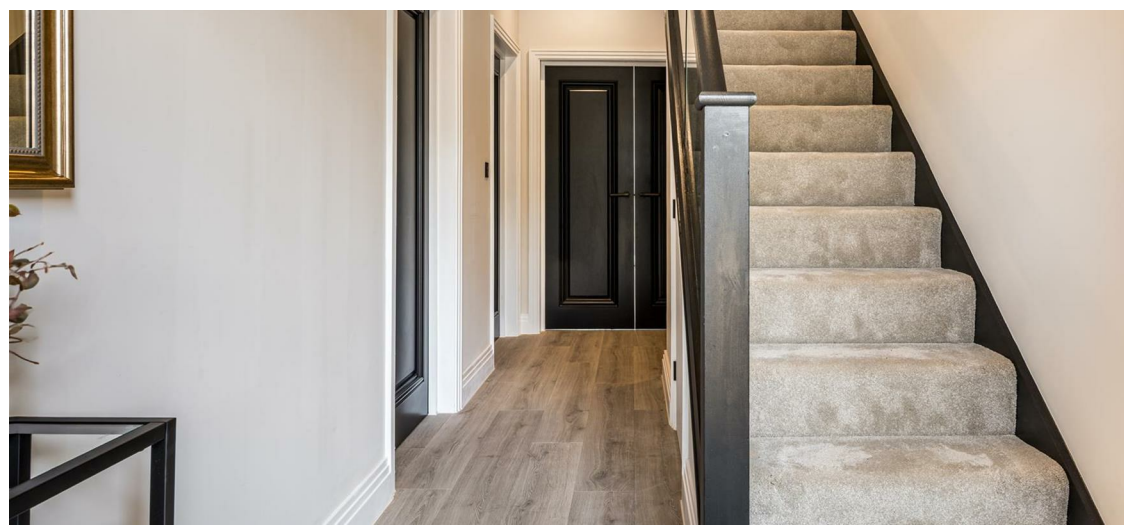
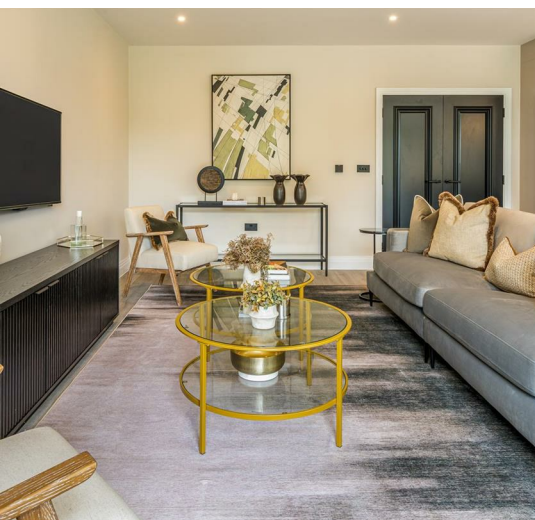
14'3" x 8'6" (4.35m x 2.60m)

Quiet and versatile workspace with generous natural light.

## CLOAK ROOM

5'10" x 4'11" (1.80m x 1.50m)

Stylish contemporary WC with premium finishes.





### BEDROOM 2

15'10" x 9'4" (4.85m x 2.85m)

A bright and spacious double bedroom with peaceful views.

### EN SUITE 2

8'6" x 5'1" (2.60m x 1.55m)

Elegant en-suite with contemporary tiling and quality fittings.

### BEDROOM 3

12'11" x 9'4" (3.96m x 2.85m)

Well-proportioned double bedroom ideal for guests or children.

### EN SUITE 3

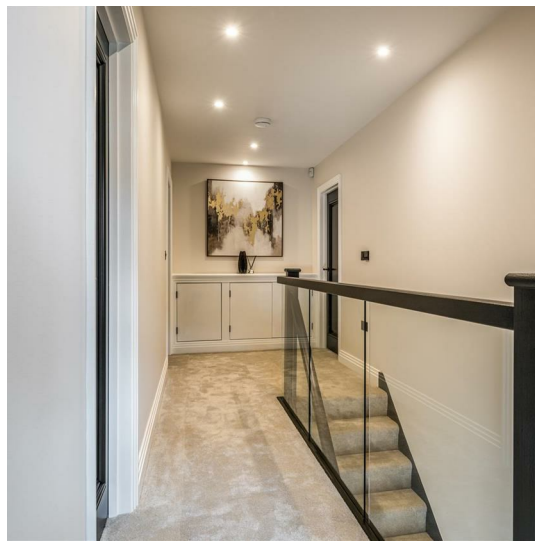
9'4" x 4'11" (2.85m x 1.50m)

Modern en-suite with sleek tiling and high-quality fixtures.

### BEDROOM 4

14'5" x 8'10" (4.40m x 2.70m)

A comfortable double bedroom with ample space and natural light.







## PRINCIPAL BEDROOM

26'10" x 10'7" (8.20m x 3.25m)

A substantial sanctuary featuring dressing area and luxury en-suite.

## PRINCIPAL EN-SUITE

11'3" x 8'6" (3.45m x 2.60m)

Spa-style en-suite with walk-in shower, designer fittings and refined finishing.



## BEDROOM 5

16'11" x 9'2" (5.16m x 2.79m)

Generous top-floor bedroom with elevated views.

## BEDROOM STORE

7'10" x 7'1" (2.39m x 2.16m)

Useful storage or dressing area adjoining Bedroom 5.

## FAMILY BATHROOM

11'0" x 5'9" (3.35m x 1.75m)

Contemporary family bathroom with bath, overhead shower and premium fittings.

## STORAGE





**SPECIAL DEAL - EXCLUSIVE OFFER -  
LIMITED PERIOD ONLY**

Nestled in this tranquil and sought-after neighbourhood of Enfield, Chase View presents an exclusive collection of four beautifully crafted five-bedroom detached homes by Amara Property. Blending sophisticated contemporary design with the comfort and practicality of modern family living, these residences offer generous interiors, landscaped gardens and captivating semi-rural views - all set on a peaceful private road.

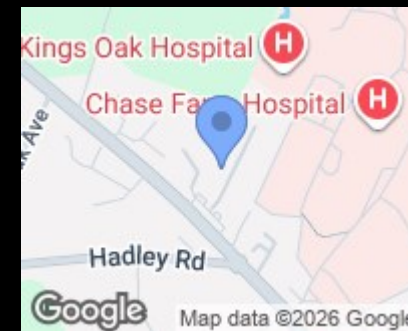




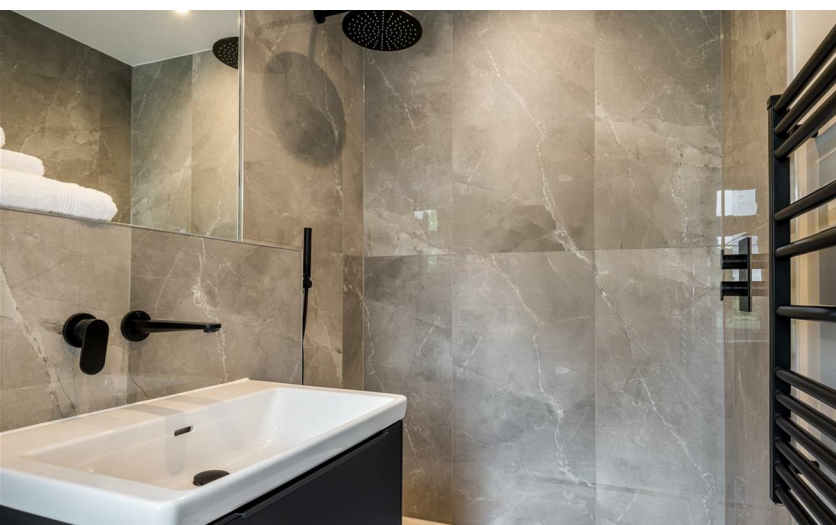


Offering exceptional craftsmanship, elegant design and seamless access to both nature and the city, Chase View represents a rare opportunity to secure a luxurious family home in one of Enfield's most desirable pockets. Early reservations are strongly advised.



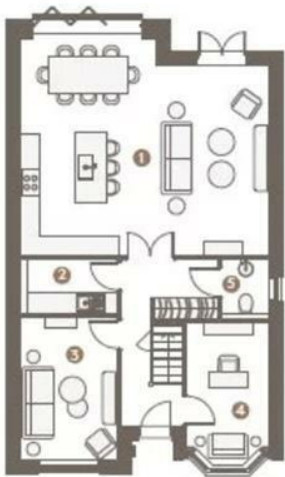


Set within the leafy and highly desirable enclave of Spring Court Road, Chase View enjoys an enviable position moments from rolling Green Belt landscapes, Albany Park, and the historic Forty Hall Estate. Enfield Town is close by, offering high-street shopping, independent boutiques, cafés and an ancient market square, while a choice of excellent schools makes the area particularly attractive for families. Gordon Hill Railway Station is within easy walking distance, providing direct rail links into central London, and the nearby M25 and Hertfordshire border offer superb road connectivity.



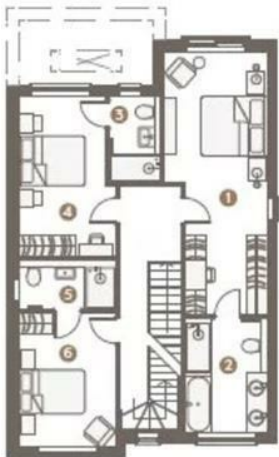
Enfield  
Band G





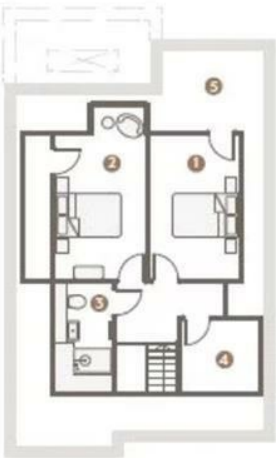
G  
GROUND FLOOR

1. Kitchen/Living/Dining	47.17 Sqm (507.73 Sqft)
2. Utility	4.67 Sqm (50.26 Sqft)
3. Formal Living	12.69 Sqm (136.59 Sqft)
4. Study	10.06 Sqm (108.28 Sqft)
5. Cloak Room	2.54 Sqm (27.34 Sqft)



01  
FIRST FLOOR

1. Principal Bedroom	21.83 Sqm (234.97 Sqft)
2. Principal En-Suite	8.81 Sqm (94.83 Sqft)
3. En-Suite 2	3.95 Sqm (42.52 Sqft)
4. Bedroom 2	13.38 Sqm (144.02 Sqft)
5. En-Suite 3	4.24 Sqm (45.63 Sqft)
6. Bedroom 3	11.87 Sqm (127.76 Sqft)



02  
SECOND FLOOR

1. Bedroom 4	11.68 Sqm (125.72 Sqft)
2. Bedroom 5	13.21 Sqm (142.19 Sqft)
3. Family Bathroom	3.64 Sqm (39.18 Sqft)
4. Bedroom Store	5.10 Sqm (54.89 Sqft)
5. Storage	





PRESTIGE & VILLAGE

UK's finest properties

[PROPERTY@PRESTIGEANDVILLAGE.CO.UK](mailto:PROPERTY@PRESTIGEANDVILLAGE.CO.UK)

[WWW.PRESTIGEANDVILLAGE.CO.UK](http://WWW.PRESTIGEANDVILLAGE.CO.UK)